

Auctioneer *Bambeck Auctioneers Inc.*

Sold! - \$970,000

AUCTION

Court-Ordered Auction of Construction Equipment

COSMOS INDUSTRIAL SERVICES INC.



**2000 ARS Blast
Recycler**



**2011 Terex Bid-Well
Bridge Finisher**

Receivership Auction • Cuyahoga County Court of Common Pleas
Case No.: CV-15-850576



2005 Cat 320CL

**Auction location:
9103 Detroit Ave.
CLEVELAND, OH 44102**

**Wednesday
April 13
9:00 A.M.**

Auction Managed & Conducted By:

BAMBECK AUCTIONEERS
 I N C O R P O R A T E D
 auctioneers • real estate brokers • appraisers
 PO Box 549, Dover, Ohio 44622-0549 • (330) 343-1437

www.bambeck.com

Bid Live On-Site or Online @:



MAJOR ITEMS ONLY

AUCTION:

**WED. • April 13
STARTING AT 9:00 A.M.**

SHOT BLASTING EQUIPMENT:

2000 Advanced Recycling Systems Aries-Vac 4-pot blast recycling machine, s/n 19H40J8H462JD26B48308, ITI triaxle trailer, VIN: 1Z9SC453XYM048308, John Deere 6081 8.1L diesel power unit, Stateline SY-45 45 KW diesel generator

2008 Advanced Recycling Systems DC-45 45,000 cfm portable dust collector, s/n 091614S361AJ68T0082, mounted on 2009 ITI T/A tag-a-long trailer, VIN: 1Z9TP27229M310082

1994 Titan 45,000 cfm portable dust collector, #08004-005, Detroit 6-cyl. diesel eng., mounted on T/A trailer

1993 Key Houston T/A portable sand blast pot, s/n 96272, 4-hose, pintle hitch

1987 Bowen Tools 6-ton T/A portable sand blast pot, s/n 1K87, 4-hose, pintle hitch

(2) 2008 Schmidt 10 cu. ft. abrasive blasters • (3) Bowen Tools Sanstorm 7 cu. ft. blast pots, s/n BRW-4K74, NA • 2011 Marco 6.5 cu. ft. blast pot, s/n M65E-430 • 2010 Marco 1 cu. ft. blast pot, s/n M1-1121 • Schmidt 1 cu. ft. blast pot • Lindsay 300 blast pot • 1500' 1.5" blast hose • 1,500' 1.25" blast hose



**2000 ARS Blast
Recycler**



**2008 ARS DC-45
Dust Collector**



**1994 Titan
Dust Collector**



**2011 Terex Bid-Well
Bridge Finisher**

BRIDGE PAVER:

2011 Terex Bid-Well 3600 roller bridge finisher, s/n B-3600-446-2011, Kohler Command 20 gas engines, 0249 and 0366 hours, 50' paving width - 12', (4) 6', (3) 4', 2' sections, 4-wheel travel dolly, (176) 10.5' rails, (22) 20.5' rails, (150) rail chairs, (2) 2418 15/25' workbridges with (4) 6' extensions (This item subject to \$30,000 minimum bid to cover lien)

EXCAVATOR:

2005 Caterpillar 320CL hydraulic excavator, s/n PAB03485, 08593 hours, 32" TBG pads, Cat 42" digging bucket

www.bambeck.com

**9103 Detroit Ave.
CLEVELAND OH**

**Inspection:
April 12 • 9-4**

**1 of 2 I.R. 1300 cfm
Compressors**



PORTABLE AIR COMPRESSORS & DRYERS:

(2) 1999 Ingersoll Rand 1300 cfm portable air compressors, model HP1300WCU, s/n's 304730UIJ729, 303812UHJ729

2005 Ingersoll-Rand XP375WIR 375 cfm portable air compressor. s/n 357421UEPA57, 4241 hours, NEEDS REPAIR

(2) 2006 Ingersoll-Rand P185AWIR portable air compressors, s/n 's 361796UJP820, 361230UIP820, 3207 & 3233 hours

2005 Ingersoll-Rand P185WJD portable air compressor, s/n 353804UBP221, 3442 hours

2004 Ingersoll-Rand P185AWIR portable air compressor, s/n 342767UA0820

Ingersoll Rand 185 cfm portable air compressor, s/n 144478U84957, 4034 hours, JD 4239DF eng.

2005 Sullivan-Palatek D210Q11JDB 210 cfm portable air compressor, s/n 25947, 2965 hours, NEEDS REPAIR

Ingersoll-Rand 30T portable 2-stage air compressor, s/n 30T839327 Kohler Command 11 gas eng.

2006 Van Air Blast Pak D-36-S portable air dryer, s/n 118854, mounted on 12' T/A utility trailer, aluminum tool box

2007 Van Air Blast Pak D-30-S portable air dryer, s/n 119684, mounted on Parker 12' T/A utility trailer, pintle hitch

PAINTING EQUIPMENT:

Graco Xtreme X60DH3 220cc airless paint sprayer, s/n A4048 • **(2)** Titan Speeflo Admiral 941-441 airless paint sprayer, s/n 08-02-70, NA • **(2)** Titan 941-347 paint sprayers • **Titan** Speeflo Powr Twin 4900 XLT gas paint sprayer • **Graco** GMax 10000 gas paint sprayer • **Graco** Xtreme King 68:1 paint sprayer • **Graco** 3 GPM 30:1 air operated paint pump • **Graco** King 20-1 air powered paint pump, s/n 207567 • **(4)** Graco Line Lazer 3400 paint strippers, Honda 4 hp. gas eng., s/n's BA2181, BA2012, BA1313, BA0609 • **(3)** Electric paint sprayers • Goldblatt 13300 texture compressor, s/n AM72944 • Eagle Industries air cleaner

SKID LOADER • FORK LIFTS:

2009 Bobcat S300 skid steer loader, s/n A5GP35197, 5360 hours, bucket, pallet forks

Gradall 534D6-42 6,000 lb. x 42' all terrain telescopic fork lift, s/n 0688334, 04300 hours

Toyota 7FGU32 6500 lb. LP gas fork lift truck, s/n 66240, 9700 hours, 131.5" lift ht., side shift, cushion tires

Caterpillar V50D 5000 lb. LP gas fork lift truck, s/n 3EC3523, 2-stage mast, air tires

Yale 3,000 lb. LP gas fork lift truck, model GLC030AENUAF072, s/n N513388, 07990 hours, 104" lift ht., side shift, cushion tires



MISC. CONSTRUCTION EQUIPMENT:

2012 Crafc E-Z Pour 50 50-gallon asphalt sealer melter, s/n 1C9EJ081XC1418378, S/A trailer, pintle hitch • **Marathon** Electric Lima Mac 15 KW portable diesel generator set, model 260MSL1432, s/n LM-346412-0200, 18.8 KVA, 0.8 PF, 120/208Y, 4-cyl. diesel eng., 09013 hrs., 50-gal. fuel tank, gang tool box, 10' S/A utility trailer, pintle hitch • **MBW Blitzscreed** 33' vibratory truss concrete screed • **(4)** Allmand Night-Lite Pro Series portable light plants, Kubota D905 eng. • **American Signal** CMST331 Solar portable message board, s/n 1A9BS331252228090, S/A trailer • **(5)** 2013 Wanco WTSP light arrow boards, s/n 5F11S1010D1000231, 233, 234, 235, 236 • **(3)** Allmand 2200ALT arrow boards, s/n's MLAL8155, MLAL8112, MLAL8100 • **(2)** 20' Steel cargo containers • Strato-Lift LRX-20 platform scissors lift, s/n X4585, NEEDS REPAIR • JLG 33RTS platform scissors lift, NEEDS REPAIR • Hunter Runt platform scissors lift, NEEDS REPAIR



AUCTION:

COSMOS INDUSTRIAL SERVICES INC.

TRUCKS - VEHICLES:

1995 Ford L8000 T/A dump truck, VIN: 1FDYU82E9SVA53053, odometer: 210992 miles, Roadranger RT-6613 trans., 13' steel dump bed

1995 Ford F800 S/A boom truck, VIN: 1FDPF70J8SVA74069, odometer: 076434 miles, 4069 hours, gas eng., 5/2 trans., 14' utility bed, Telect Captain 3900 boom, 2 hyd. outriggers

1983 Chevrolet 70 T/A boom truck, VIN: #GBS7D4G3DV107995, odometer: 57953 miles, Eaton 5/2 trans., Detroit 8.2L diesel eng., steel bed with diamond plate steel deck, RO 80-1 crane, s/n 1800582102, 16000 lb x 55' boom, 16' jib

1994 International Eagle 920 T/A truck tractor, VIN: 2HSFMM6R0RC081722, odometer: 076330 miles, Eaton Fuller 10-sp. trans., 40,000 lb. rears

1994 White GMC Volvo T/A truck tractor, VIN: 4V1WDBRF6RN682918, Detroit Series 60 12.7L eng., Eaton Fuller RTX-14609B 9-sp. trans., 48" mid-rise sleeper, mileage unknown

(2) 1990 Ford F600 S/A crash trucks, VIN: 1FIDNK64PXLVA07437, 1FDNK64P5LVA02209, Ford 165 hp. 6-cyl. diesel eng., 5/2 trans., 14' steel bed, 2012 Trinity MPS-350 truck mounted attenuators, s/n 577-117, 577-124

1971 Mack DM607S T/A water truck, VIN: 7242, 1977 Heil 2500 gal. SS tank, Honda GC190 gas eng. pump

2011 Chevrolet Silverado 2500HD extended cab 4x4 pickup truck, VIN: 1GC2KVCG1BZ249978, 103446 miles, 6.0L gas eng., towing pkg. 8' bed, Jobox tool boxes, ladder rack

2005 Dodge Ram 3500 SLT 4x4 crew cab dual wheel pickup truck, VIN: 3D7MS48C95G742293, 199723 miles, Cummins 325 hp. eng., 8' bed, towing pkg., alum tool box, light bar

2004 Ford F550 Super Duty XL 2WD dual wheel service truck, VIN: 1FDAF56P94ED32642, 179156 miles, V8 Power Stroke diesel eng., auto trans., Reading utility bed, towing pkg., light bar

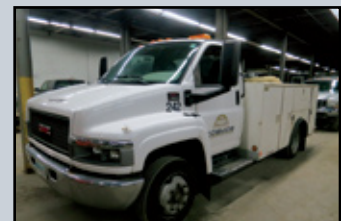
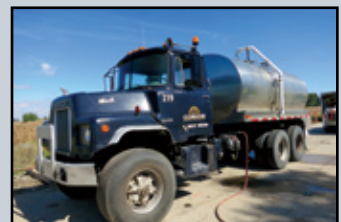
2004 GMC C4500 2WD dual wheel service truck, VIN: 1GDE4C1E14F517182, 261177 miles, 8.1L gas eng., Stahl 11' steel utility bed

2004 GMC C4500 2WD dual wheel service truck. VIN: 1GDE4C1E44F511683, 295929 miles, 8.1L gas eng., towing pkg., Stahl utility bed, light bar

1995 Ford F450 Super Duty 2WD dual wheel service truck, VIN: 1FDLF47F5SEA44980, 222816 miles, Power Stroke diesel eng., 4-sp OD standard trans., Reading body, pintle hitch

2002 Ford F350 Lariat Super Duty 4x4 crew cab dual wheel pickup truck, VIN: 1FTWW33F72EC03774, 270683 miles, V8 diesel eng., towing pkg., 8' bed light bar

2000 GMC 2500 SL 2WD pickup truck, VIN: 1GTGC24U6YE136078, 298339 miles, gas eng., towing pkg., 8' bed



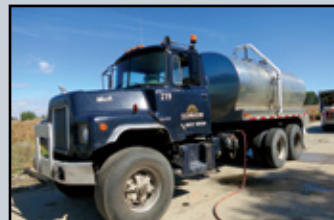
www.bambeck.com

AUCTION:

TRUCKS - VEHICLES CONT'D.:

2001 Ford F350 Lariat Super Duty dual wheel pickup truck, VIN: 1FTWW32F51EA52370, 249680 miles, Power Stroke V8 diesel eng., auto trans., 4-door cab, leather pwr buckets, towing pkg., alum. tool boxes • **2001 GMC** 2500 HD SLE extended cab 4x4 pickup truck, VIN: 1GTHK29U11E223280, 6L gas eng., 8' bed, towing pkg., ladder rack • **2000 GMC** 2500 SLT extended cab 4x4 pickup truck, VIN: 1GTGK29U0YE274808, 302282 miles, gas eng., towing pkg., 6' bed • **1999 GMC** 2500 SL 2WD pickup truck, VIN: 1GTGC24U5XE542853, 268264 miles, 8-cyl. gas eng., 8' bed, tool box • **2010 Dodge** Ram 1500 SLT 2WD reg cab pickup truck, VIN: 3D7JB1EP9AG102491, 114151 miles, 4.7L gas eng., towing pkg., 8' bed, Adrian tool box • **2009 Dodge** RAM15002WDregcabpickuptruck, VIN: 1D3HB16P79J516250, 138896 miles, 8' bed, NEEDS REPAIR • **2009 Dodge** Ram 1500SLT2WDregcabpickuptruck, VIN: 1D3HB16P09J506322, 88710 miles, 4.7L gas eng., towing pkg., 8' bed • **2009 Dodge** Ram 1500 SLT 2WD reg cab pickup truck, VIN: 1D3HB16P09J516624, 113609 miles, 4.7L gas eng., 8' bed, towing pkg. • **2008 Dodge** Ram 1500 SLT 2WD reg cab pickup truck, VIN: 1D7HA16N28J180859, 138328 miles, 8' bed, towing pkg, Adrian aluminum tool box, light bar • **2008 Dodge** Ram 1500 SLT 2WD reg cab pickup truck, VIN: 1D7HA16N08J180861, 171206 miles, 8' bed, towing pkg. • **1997 Ford** F150XL 2WD extended cab pickup truck, VIN: 1FTDX1721VNA90568, 290388 miles, 4.2L gas eng., auto trans. • **1999 Ford** F350XL Super Duty 4x4 stake bed truck, VIN: 1FTSF31S8XEC82202, 303571 miles, V10 gas eng., 8' steel bed, wood deck, towing pkg. • • **1985 Ford** F700 S/A flatbed truck, VIN: 1FDPK74N3FVA53760, 123229 miles, diesel eng., 5/2 trans., 16' steel bed with stake pockets • **2005 Ford** E350 Super Duty box truck, VIN: 1FDNE35L35HA97307, 185146 miles, 5.4L gas eng., auto trans., ABC aluminum box, overhead door, towing pkg., Aurora light bar

2002 Chevrolet 3500 van box truck, VIN: 1GBHG31R521238442, 098831 miles, 5.7L gas eng., auto trans., Supreme 12' aluminum box • **2002 Ford** E450 Super Duty box truck, VIN: 1FDXE45FX2HA35455, 165952 miles, V8 Power Stroke diesel eng., auto trans., • **1998 GMC** C6500 S/A box truck, VIN: 1GDK7H1J1WJ501066, 280358 miles, Cat diesel eng., 6-speed trans., Morgan 24' FRP box, hyd. lift • **1994 International** 4700 S/A box truck, VIN: 1HTSCACM1RH596435, 144381 miles, DT408 diesel eng., Spicer 5-speed trans., Morgan 24' FRP box, overhead and side door, NEEDS REPAIR • **1990 GMC** TopKick S/A box truck, VIN: 1GDJ7H1POLJ604409, 111442 miles, gas eng., Allison auto trans., Morgan 18' FRP box, overhead door • **2003 Ford** E450 passenger coach, VIN: 1FDXE45F03HA11084, 227966 miles, Power Stroke diesel eng., auto trans., Goshen 16-seat coach, wheel chair lift • **1993 Ford** 350 contractors van, VIN: 1FTJE34H2PHB64319, V-8 gas eng., auto trans. • **1993 GMC** 3500 SL 2WD flatbed pickup truck, VIN: 1GDJC34F8PE531273, 282799 miles, diesel eng., 9' stake bed, NEEDS REPAIR • **1997 Ford** F150XL pickup truck, VIN: 2FTDF1729VCA01418, 4.2L gas eng., auto trans., FOR PARTS



AUCTION:

**WED. • April 13
STARTING AT 9:00 A.M.**

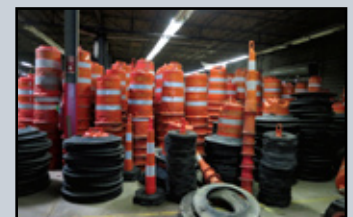
MISC. EQUIPMENT • TOOLS • SUPPLIES:

(143) 12' interlocking concrete traffic barriers • Kenco KL9000 9,000 lb. barrier lift • (190) Bridge overhang brackets • (18) 19 lb. air chipping hammers • 60 & 35 lb. air hammer • (400) orange barrels, (150) traffic cones, (100) traffic signs & stands, (7) barricades • (40) Aluminum picks - 28"x32' to 12"x20' • Scaffold - 69 bucks, 24 jacks, braces & dollies, 7 7' aluminum walk boards, scaffold safety rails & brackets • (2) 1"x8'x14' Street plates • (3) Aluminum man baskets with hoists • (2) Aluminum man baskets, (2) drill hoists • (2) ICE Frost Fighter IDF-500-II 500,000 BTU/Hr. fuel oil heaters • WB 22" pavement removal bucket for Link Belt • (3) Pressure Pro 7000 pressure washers, Honda 24 hp. gas eng. • Walker Bay 8' poly boat with oars

Bridge beam brackets, pallets of block shieves, C-clamps, shackles, wire rope slings, 4 partial spools unused wire rope, fall safety nets, Miller MightEvac MR50G 50' lifeline, safety harnesses & lanyards, concrete blankets, tarps, rolls of plastic, 2 air movers, air hose, electric cords, 3 airline filters, few blast helmets, 2 paint pots, paint hose, shop vacs, work lights, 3 airline filters, few blast helmets, pallets of rope, DPS DP65HV-P concrete vibrator-submersible pump w/ Honda GX 200 motor, Winco 3000 generator, Alto SHW3000GH 13 hp gas steam pressure washer, Mi-T-M 2000 steam pressure washer, Hotsy 980A 2000 psi steam pressure washer, Putzmeister S5 EV elec plaster fireproofing

WELDERS:

2000 Miller Bobcat 225 NT 8500 watt generator welder, s/n LA035328, S/A trailer with pindle, leads, gun • Miller Blue Star 185DX gas welder/generator • Miller Millermatic 350 mig welder, s/n LK500052N, cart, leads, gun • Lincoln AC225 arc welder



Equipment Inspection: Tues., April 12, 9-4

www.bambeck.com

**9103 Detroit Ave.
CLEVELAND OH 44102**

**Inspection:
April 12 • 9-4**



**Portable 4-Hose
Blast Pot**



SHOP & WAREHOUSE EQUIPMENT:

Chippewa 9000 lb. 2-post automotive lift, model GP09A, s/n 011956804090 • Kalamazoo 9AW manual horizontal band saw, s/n 210 • Astroline TS22 20-ton H-frame shop press • Palmgren 80206 20" floor drill press • Ingersoll Rand T10 5 hp. electric air compressor, 1988 vertical tank • Ingersoll-Rand T30 71TE 10 hp. 2-stage horizontal tank air compressor • Vestil self-dumping fork lift hopper • (37) Sections pallet rack • oxy/acetylene torch & carts, strapping reel & hand tools, (3) floor jacks, jack stands, Hitachi cut-off saw, Sears 12" band saw, torch carts, 2 dock plates, hand pallet jack, hand trucks, assorted shelving, parts bins, creeper, battery charger, 2 utility carts, work bench & vise, storage cabinets

TRAILERS:

2006 Kaufman 25 ton x 33' T/A drop deck trailer, VIN: 15XFR45296L002993, 9' upper deck, 20' lower deck, ramps • **1979** Trailmobile 870 cu. ft. 2-compartment steel T/A bulk sand trailer, VIN: T40998 • **1978** Fruehauf 45' T/A dry van trailer, VIN: HPZ610241, aluminum skin • **2014** Quality Steel & Aluminum 7'x14' T/A dump trailer, VIN: 5LEB1D521E1147036, pintle hitch • **2009** Econoline model DP1025DE 10 ton x25' T/A deckover equipment trailer, VIN: 42EDPKK2291000023, wood deck, 5' dove tail, ramps, pintle hitch • **2014** Econoline 7 ton x 18' T/A equipment trailer, VIN: 42EFPCG29E1000585, wood deck, ramps, pintle hitch • **1992** Obrecht 20' T/A deck-over equipment trailer VIN: 109US2021NP128174 • **2012** American 6-ton x 18' T/A utility trailer, VIN: 1A9UH18S9C1668078, pintle hitch, no ramps • **2011** Carry-On 6-ton x 18' T/A trailer, VIN: 4YMUE1825BG019827, 2' dove tail, ramps, pintle hitch • **2011** Carry-On 6-ton x 18' T/A trailer, VIN: 4YMUE1827BG019828, 2' dove tail, ramps, pintle hitch • **2012** Carry-On HDX Series 7'x16' T/A utility trailer, VIN: 55XHV1829C3001720, pintle hitch • 80"x16' T/A utility trailer, wood deck, pintle hitch, (2) 300 gallon poly tanks • Two-wheel car dolly

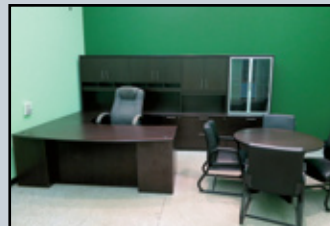
SHOWER/OFFICE TRAILERS: 1994 Technical Space 8'x32' shower trailer, 2 doors, 4 showers, 80-gal. water tanks, electric water heater, pintle hitch • 8'x30' T/A office trailer, roll-up rear door, side door, pintle hitch • 8'x28' S/A office trailer, roll-up rear door, side door, pintle hitch • 8'x26' T/A office trailer, pintle hitch • 8'x20' S/A office trailer, pintle hitch • 8'x16' S/A office trailer, side door, pintle hitch

OFFICES:

Kenmore Elite 18.6 cu. ft. freezer/18.6 cu. ft. refrig w/ ss doors; GE Profile 30" electric range; Wood suite w/ credenza & round table; Wood suite w/ credenza, round table, two-drawer lateral file; (7) U-shape laminated desk & credenza; (3) Laminated conference tables-10'7"/6'; (48) swivel chairs (8) Five-drawer lateral files (5) Two-drawer lateral files (6) Metal/wood desks Lifetime 6' folding table & (10); chairs (5) book shelves, assorted file cabinets, 6' table, (2) 6' work top metal supply cabinets, (2) drafting tables, (2) sofas, metal supply cabinet, (4) 18x48" 5-shelf wire shelving units, (2) 18x48" chrome wire shelving units, (3) heavy metal shelving units, 68x52" wood corner booth, dining table & 2 chairs, 8' lunch room table

Ricoh Aficio MP C4500 color copier with feeder, finisher, 4 paper trays; Fellowes 425Ci paper shredder; Apollo 3000 overhead projector; Fellowes C-480C paper shredder; Hoover Steamvac carpet cleaner; (2) Dyson floor vacs; Sharp micro-waves; coffee maker

(10) 19"-22" flat panel PC displays; Laser Printers - (4) HP Laserjet P2055dn; HP Laserjet P2015dn, (2) HP Laserjet Pro M401dn; HP Designjet 4500 scanner and Designjet 4500ps printer, Q5677B printer; Panni VisionX check scanner



Bid Live On-Site or Online @:



MAJOR ITEMS ONLY

AUCTION:

Cosmos Industrial Services Inc.

**WEDNESDAY • April 13
STARTING AT 9:00 A.M.**

**9103 Detroit Ave.
Cleveland OH 44102**

Note: Although the information contained herein has been obtained from sources believed to be reliable, prospective buyers are encouraged to make their own inspection prior to purchase. Neither the auctioneer nor the seller assume responsibility for errors or omissions in advertising material. All items sell as is, where is. THE ITEMS LISTED HEREIN MAY BE INSPECTED ON Tuesday, April 12, 9-4 and on morning of auction beginning at 8:00 A.M.

PAYMENT TERMS (Live On-Site Bidding): Payment in full upon conclusion of auction by cash or in-state business check. Buyers outside Ohio paying by business check must provide a current bank letter guaranteeing payment to Bambeck Auctioneers Inc. (SEE SAMPLE LETTER ON FOLLOWING PAGE)

WEBCAST BIDDER INSTRUCTIONS: *

All internet bidders must register for the auction at **www.bidspotter.com** at least 48-Hours Prior to the Sale Date. All Internet bidders must make a deposit of 25% of the maximum amount you plan to spend or a minimum of \$5,000.00 with Bambeck Auctioneers Inc. for approval to bid. Prospective internet bidders may mail a bank cashier's check for the deposit made payable to BAMBECK AUCTIONEERS INC., PO BOX 549, Dover OH 44622-0549 or more simply wire the deposit per the following instructions: JP Morgan Chase Bank, Routing No. 021000021 for credit of Bambeck Auctioneers Inc. Account No. 850153090. A buyer's premium of 3% will apply to all internet purchases.

*** NOT ALL ITEMS AVAILABLE FOR INTERNET BIDDING - MAJOR ITEMS ONLY**

Webcasts Powered by



Click here for online bidding!

Auction Managed & Conducted By:

BAMBECK AUCTIONEERS
I N C O R P O R A T E D
auctioneers • real estate brokers • appraisers
PO Box 549, Dover, Ohio 44622-0549 • (330) 343-1437

www.bambeck.com

Sample Bank Letter For Out-of-State Bidders

Any Bank USA
Any City and State

April_____, 2016

Bambeck Auctioneers Inc.
PO Box 549
Dover OH 44622-0549

RE: XYZ Company

This letter shall serve as your notification that Any Bank USA will honor/guarantee payment of any check written by XYZ Company up to the amount of \$_____ drawn on account #0000000.

This guarantee applies only to Bambeck Auctioneers Inc. for purchases April 13, 2016 at the Cosmos Industrial Services Inc. auction, Cleveland, Ohio

Please feel free to call with any questions, 555-555-5555

Very truly yours,

Mr Banker,
Vice President

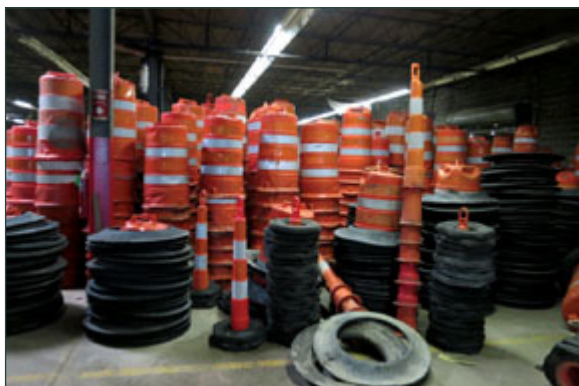






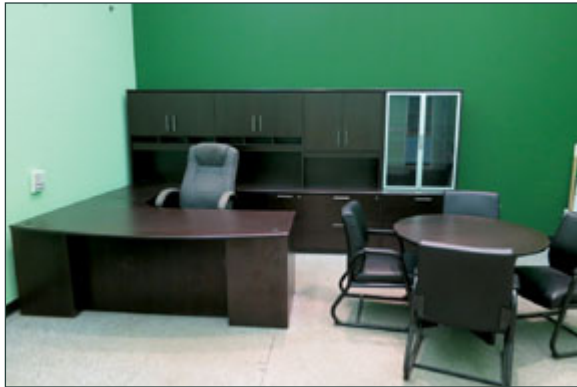












Auction Managed & Conducted By:

BAMBECK AUCTIONEERS
I N C O R P O R A T E D
auctioneers • real estate brokers • appraisers
PO Box 549, Dover, Ohio 44622-0549 • (330) 343-1437

www.bambeck.com